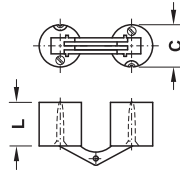
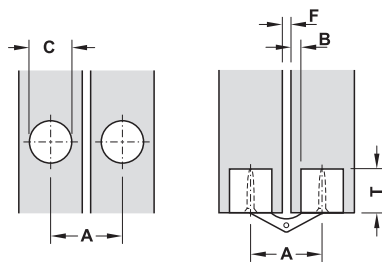


## Zysa Hinge for wood thicknesses 14–40 mm



- Opening angle: 180°
- Material: Brass
- Finish: Matt
- Mounting: For right and left hand use
- Installation: For screw fixing

### Drilling pattern



### Installation

- Position is secured by tightening the tensioning screw
- With extremely heavy loads, each of the cylinders can be secured from the front using a chipboard or wood screw

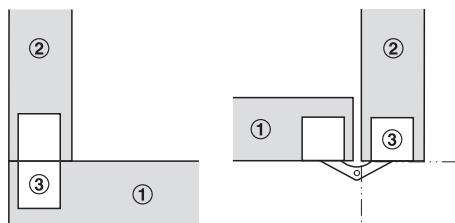
For wood thickness mm	Packing pieces	Cat. No.
14 – 19	1 or 48	341.22.506
17 – 22	1 or 48	341.23.503
20 – 26	1 or 24	341.13.507
22 – 28	1 or 24	341.11.503
24 – 32	1 or 24	341.12.500
31 – 40	1 or 12	341.14.504

### Application and planning dimensions

For wood thickness mm	14–19	17–22	20–26	22–28	24–32	31–40
Screw Ø mm	2.5	3.0	3.5	3.5	4.0	4.5
Length L mm	11.0	13.5	15.5	16.5	17.5	25.0
Drill bit Ø mm	10.0	12.0	14.0	16.0	18.0	24.0
Drilling depth T mm	11.0	13.5	15.5	16.5	17.5	25.0
Dim. A mm	16.5	20.0	23.0	25.0	27.0	36.5
Dim. B mm	2.0	2.2	3.0	3.0	3.0	3.5
Gap F mm	2.5	3.5	3.0	3.0	3.0	3.5

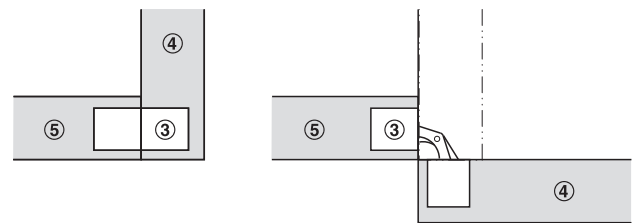
### Application

#### Mounting example for butting overlay doors



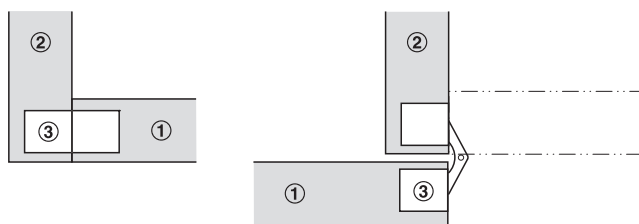
Door closed      Door open  
 ① Door ② Side panel ③ Hinge

#### Mounting example for butting overlay flaps



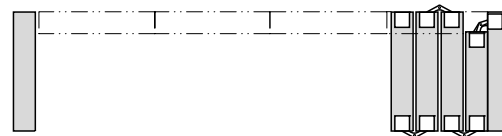
Flap closed      Flap open  
 ③ Hinge ④ Flap ⑤ Base panel

#### Mounting example for butting inset doors

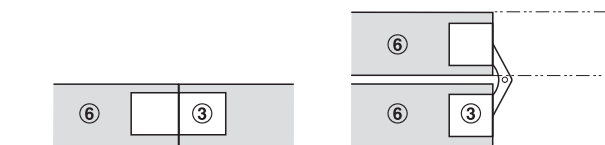


Door closed      Door open

#### Example for folding door



#### Mounting example for two panels



Panel closed      Panel open  
 ③ Hinge ⑥ Panel

DGH-M-INT 2013, HDE-en, 01/13; Dimensional data not binding. We reserve the right to alter specifications without notice.



4

Hinges for Concealed Mounting